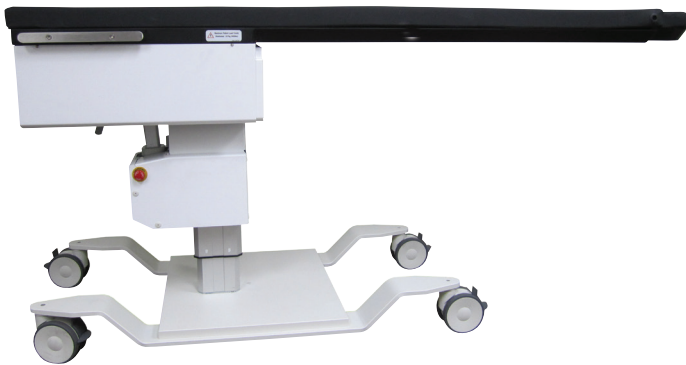


High Quality Hospital Grade Surgical Imaging Tables

The STILLE Medstone surgical imaging tables contribute to enhancing efficiency in the OR. Representing value priced solutions with quality and reliability.



Medstone5 PM with infectious control covers

The STILLE Medstone pain management series offers a broad range of motorized movements manufactured with high quality materials for durability and reliability.

1-5 movement options available

- Longitudinal
- Transverse
- Elevation
- Trendelenburg
- Lateral tilt

Standard Configuration and Specifications

- Contoured tabletop 22-82" with facial cutout (Rectangular options available)
- Heavy duty steel base frame
- Four high quality hospital grade locking casters
- Mattress pad 2" thick with "Softcare™" technology
- Hand control for all table movements
- Patient safety straps (set of 3)
- Metal free imaging 58"
- Patient weight capacity 500lbs (weight upgrade options available)
- Parts and labor warranty 3/2 year
- 110VAC, 60Hz



Optional 3 movement foot control shown



Optional arm board

STILLE Medstone Pain Tables

Medstone Series	Medstone5 PM	Medstone4 PM	Medstone4 PM	Medstone3 PM	Medstone3 PM	Medstone2 PM	Medstone2 PM	Medstone2 PM
Part number Model Ref.	500-1001 TM5(H)	500-1003 TM4(H)	500-1004 TM4ER	500-1005 TM3ER	500-1006 TM3MP	500-1009 TM2ER	500-1011 TL2	500-1013 TT2
Elevation range	26-38"	26-38"	30-42"	26-38"	26-38"	25-41"	27-43"	27-43"
Trendelenburg	15°±	15°±	15°±	15°±	15°±	x	x	15°±
Lateral tilt	15°±	15°±	15°±	x	15°±	x	15°±	x
Longitude travel	16"	16"	16"	16"	x	16"	x	x
Transverse travel	4°±	x	x	x	x	x	x	x
Infectious control covers	✓	✓	x	x	x	x	x	x

One movement table also available: **Medstone1 PM, 500-1015** (Elevation range 24-40").



Height adjustment



Trendelenburg



Lateral tilt



Longitudinal

STILLE Medstone Pain Table Options

Part number	Description
505-1101	Rectangular top 22x82" WITHOUT facial cutout
505-1102	Rectangular top 22x82" WITH facial cutout
505-1104	Patient weight upgrade 750lbs w/rectangular top 26x82" WITHOUT facial cutout
505-1105	Patient weight upgrade 750lbs w/rectangular top 26x82" WITH facial cutout
505-1110	Dual patient arm board. Slides under mattress with two arm supports
505-1112	Combination patient arm board with pad and attachment clamp. One (1) quantity
505-1106	Two (2) movement foot control
505-1107	Three (3) movement foot control
505-1108	Four (4) movement foot control
505-1109	Five (5) movement foot control
505-1113	Wireless remote hand control (not available for Medstone5 PM)

Specification tolerance: ±1°, ±.5"



Surgical Perfection

STILLE AB

Ekbacken 11
SE-644 30
Torshälla, Sweden
Phone: +46 8 588 580 00
Fax: +46 8 588 580 05
sales@stille.se

www.stille.se

STILLE Surgical Inc.

915 Parkview Blvd
Lombard, IL 60148
United States
Phone: 1.800.6651614
sales.us@stille.se